

Project:

Frost lake Playground

Date: 10/19/2020

Rev: 01/27/21

Rev: 02/19/21

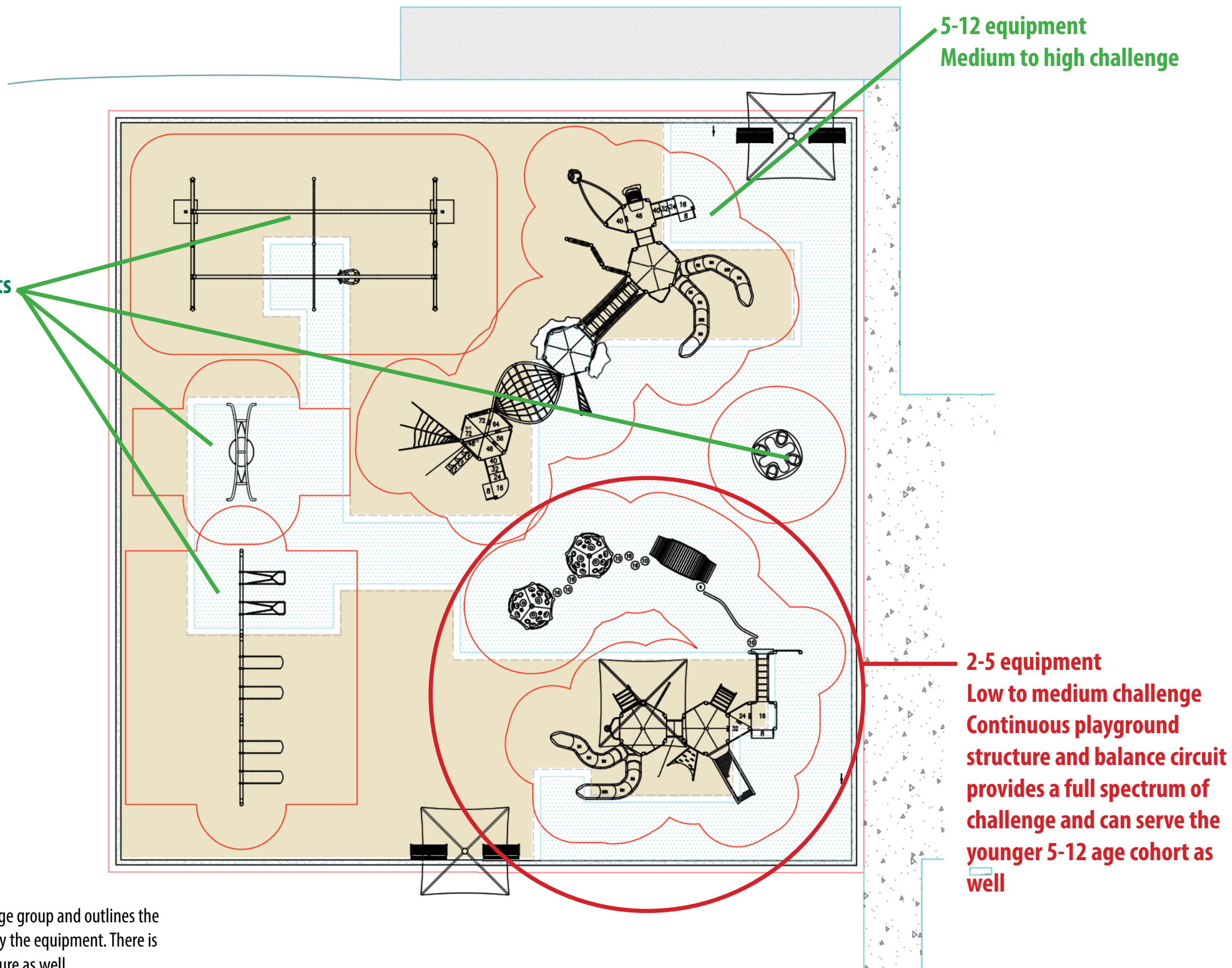
Rev: _____

Rev: _____

Rev: _____

Frost Lake Elementary
Playground
Equipment and Developmental Benefits

Scale: _____



5-12 equipment
Medium to high challenge

5-12 equipment
Ground level components

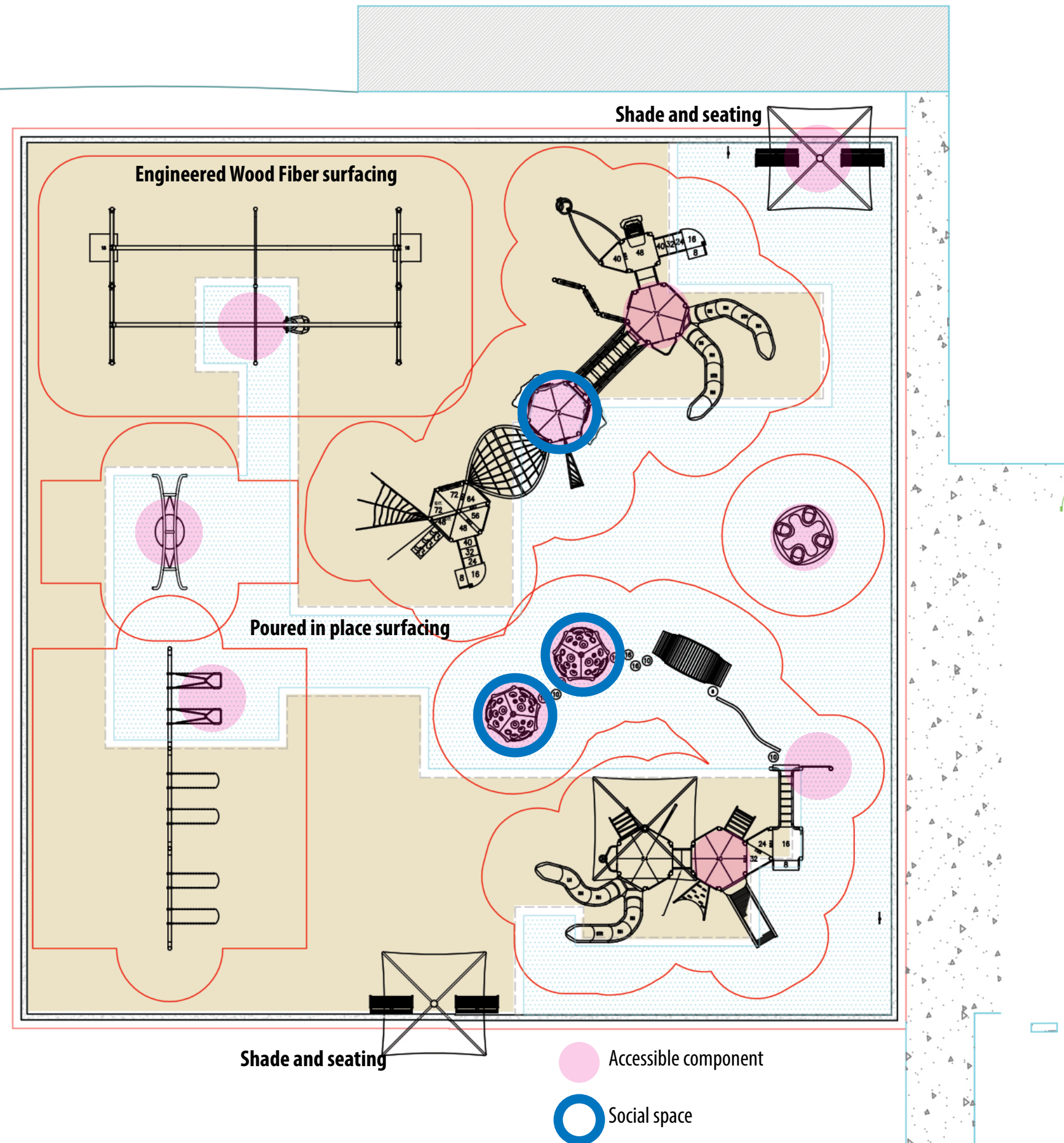
2-5 equipment
Low to medium challenge
Continuous playground structure and balance circuit provides a full spectrum of challenge and can serve the younger 5-12 age cohort as well

This image shows the equipment by age group and outlines the general level of challenge presented by the equipment. There is a spectrum of challenge in each structure as well.

Project: Frost lake Playground
 Date: 10/19/2020
 Rev: 01/27/21
 Rev: 02/19/21
 Rev: _____
 Rev: _____
 Rev: _____

Frost Lake Elementary
 Playground
 Accessibility

Scale: _____



The playground contains a number of accessible components presenting the opportunity for students of all abilities to engage with their peers.

The lighter area with cyan dots shows the footprint of the Poured in Place accessible surfacing; allowing access to a variety of ground level and elevated components. The balance of the surfacing shaded in tan, is Engineered Wood Fiber (wood chips).

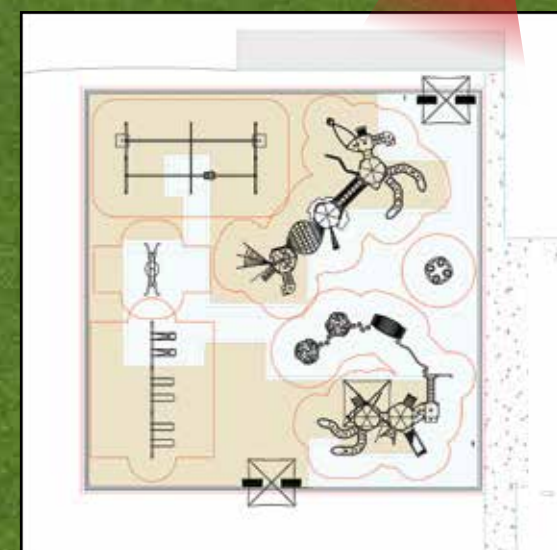


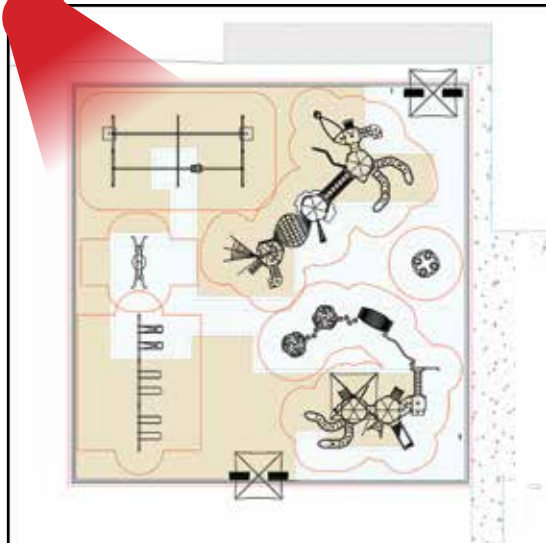
2-5 equipment
Low to medium challenge

5-12 equipment
Ground level components

5-12 equipment
Medium to high challenge

Aerial view from the NE





2-5 equipment
Low to medium challenge

5-12 equipment
Medium to high challenge

5-12 equipment
Ground level components

Aerial view from the NW



5-12 equipment
Medium to high challenge

2-5 equipment
Low to medium challenge

Aerial view from the SE

